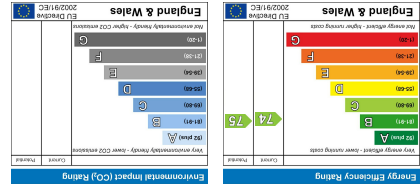


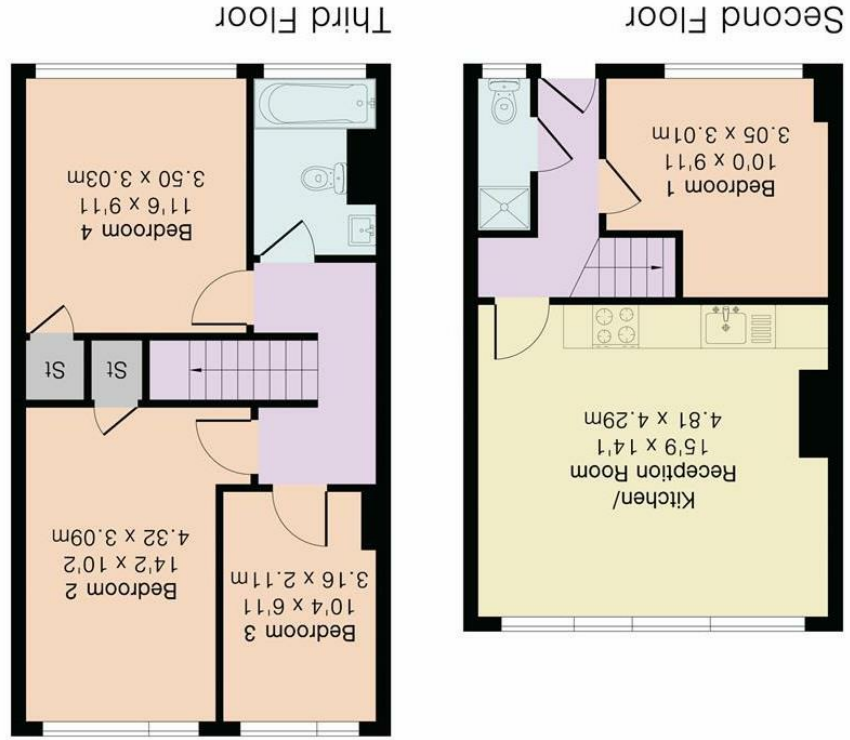
All appliances listed in these details are only 'as seen' and have not been tested by Gibson Lane, nor have we sought certification of warranty or service, unless otherwise stated. Measurements, areas and distances are approximate. Floor plans and photographs are for guidance purposes only and must not be relied upon for any purpose. These details are offered on the understanding that all negotiations are made through this company. Neither these particulars, nor verbal representations, form part of any offer or contract, and their accuracy cannot be guaranteed.





Floor plan produced in accordance with RICS Property Measurement 2nd Edition. Although Pink Plan Ltd ensures the highest level of accuracy, measurements of doors, windows and rooms are approximate and no responsibility is taken for error, omission or misstatement. These plans are for representation purposes only and no guarantee is given on the total square footage of the property within this plan. The figure icon is for initial guidance only and should not be relied on as a basis of valuation.





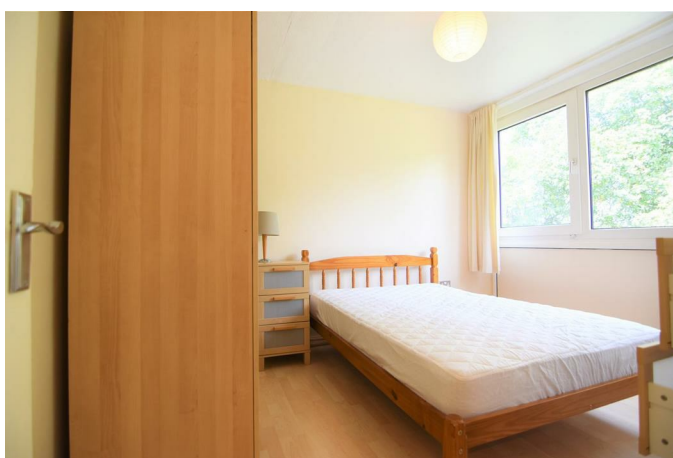
Approximate Gross Internal Area 841 sq ft - 79 sq m
 Second Floor Area 383 sq ft - 36 sq m
 Third Floor Area 458 sq ft - 43 sq m

34 Richmond Road
 Kingston upon Thames
 Surrey
 KT2 5ED
 www.gibsonlane.co.uk
 Tel: 020 8546 5444





Hersham Close
 Roehampton SW15 4JQ



£2,450 Per Calendar Month

- Available 17th July 2026
- First Floor Split Level Flat
- 2 Double Bedrooms
- 2 Single Bedrooms
- Open-Plan Kitchen/Living Area
- Tiled Bathroom With Bath & Shower
- Additional Shower Room
- Ideal For Students at Roehampton University
- EPC Rating - C
- Council Tax Band - C

Description

Gibson Lane present to market this spacious first floor maisonette on the door step of Whiteland Campus, benefitting from a bright and airy living space. Fully furnished including desks in all four bedrooms. The property is within a short walk of all local amenities and bus routes. Ideally located for students who attend Whitelands and Froebel Campuses.

Location:

Hersham Close is located just a short walk from the ever popular Richmond Park. The location is well served with many different transport links which include buses to Putney, Hammersmith and Kingston, the A3 is in very close by which provides quick access in and out of London. Close to various Universities and Queen Mary's Hospital.

Furnishing: Furnished
Local Authority: Wandsworth
Council Tax Band: C
Available Date: 16th July 2026
Deposit: £2,826
Tenancy Term: Long Term

